

## Instruction Manual

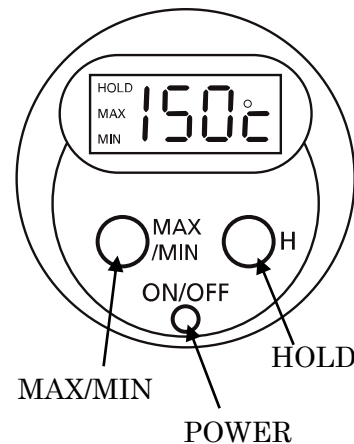
### Waterproof Digital Thermometer Model PC-9215 II

Thank you for purchasing the Waterproof Digital Thermometer Model PC-9215 II .

- This product is designed to measure temperature. Do not use it for other purposes.
- Read this manual thoroughly before using the unit and keep it in a safe place for your future references.

#### How to use

1. Press ON/OFF key once to turn the power on and the measurement starts.
2. Press this key again to turn it off.
3. Press the MAX/MIN key during the measurement and the min. and the max. values are alternately displayed.
  - \* If any operation is not done for 3 sec., current temperature is automatically displayed.
  - \* If the MAX/MIN key is pressed for more than 5 sec. or the power is turned off, Min./Max. values are reset.
4. Press “H” key to hold the temperature reading and HOLD is blinking while the measured value is being held. Press this key again to release the hold function and return to the normal display.
5. The power is automatically turned off after approx. 60 min. since the ON/OFF has been pressed (this Auto Power-off function cannot be released.)



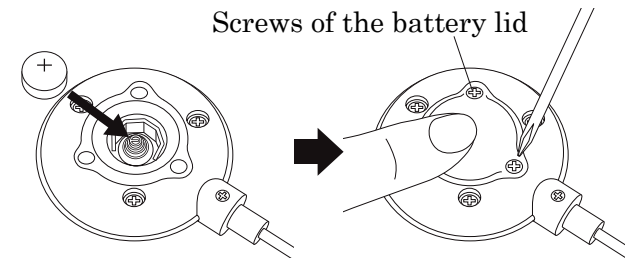
#### How to load battery

Load the battery with the procedure below in the following cases.

- When using the unit first time
- When the display becomes dim
- When the measurement error comes to occur

- ① Loosen the fasten screws (3 pcs.) of the battery lid by turning it counterclockwise with a Phillipe screw driver and remove the battery lid. At the replacement of the battery, loosen the screws while holding the battery lid so as not to pop up the used battery.
- ② Put the battery on a spring with polarity (+) upward.
- ③ Check that the rubber packing is in the groove. Then, close the battery lid while holding the battery with the battery lid to prevent the battery from rising.

\* Do not overtighten the screws. If so, the battery lid may be broken.



Note: When the battery power is insufficient, the display becomes dim and the measurement error may occur. Immediately replace the battery to new one. If continuously use without replacing, the accurate measurement will be obtained.

## Warnings

- Do not solder, short-circuit, disassemble, heat or fire a battery. Doing so may cause an exothermic heat, a leakage of battery fluid or an explosion.
- If the leaked fluid is spilt on your clothes or your skin, wash it off with water and if it gets into your eyes, wash it off with clean water and seek a medical attention immediately.
- Battery poses a danger of suffocation or poisoning if swallowed. Keep batteries out of reach of children.
- When the battery is not in use, insulate the terminals with tape to prevent contact with other metal objects or batteries. Otherwise, a short circuit may occur and cause a fire or explosion.
- For environmental conservation, dispose used batteries in compliance with local rules and regulations.

## Cautions

- After measurement, put the sensing stem in the sheath attached.  
At sheathing, make sure to confirm that the temperature is lower than 40°C.
- Be sure not to continuously measure the object of high temperature for more than 5 minutes. If so, the heat of the sensor conducts to the body and may cause failure or the deform or breakage may occur
- Do not bend or snap the sensor stem.
- Do not use the unit in a water although you can operate it with wet hands
- Do not clean the instrument with alcohol, thinner or any other solvents. Use a clean cloth moistened with warm, neutral detergent water.
- Never dissemble or alter the instrument.

## Specifications

Name	Waterproof Digital Thermometer
Model	PC-9215 II
Cat. No.	1747-50
Measuring Range	-30 to 150°C
Accuracy	±1 °C at 0 to 140°C ±2 °C at other range
Sampling Time	every 1 second
Power Requirement	1.5VDC (one LR44 button cell battery)
Battery Life	about 9 months (one hour use in a day)
Dimensions	Main unit: Ø47 × (t) 20 × (L) 176 mm (w/ sensor) Sensing section: Ø3.5 × (L) 116 mm
Materials	Main unit and sheath: ABS resin Sensing stem: stainless steel
Waterproofness	Conform to JIS C0920 IPX5
Weight	about 25 g (inclusive of a battery)
Accessories	Sheath with clip (Ø10 x 144mm), One LR44 button cell battery

\* Heatproof temperature for meter and sheath is -10 to 40°C

\* The battery installed was used for monitoring purpose and its battery life may be shortened.

\* All specifications and appearances subject to change with or without notice.

**SATO KEIRYOKI MFG. CO., LTD.**

3-4, Kanda-kajicho, Chiyoda-ku, Tokyo 101-0045 Japan

URL: <http://www.sksato.co.jp/english/>