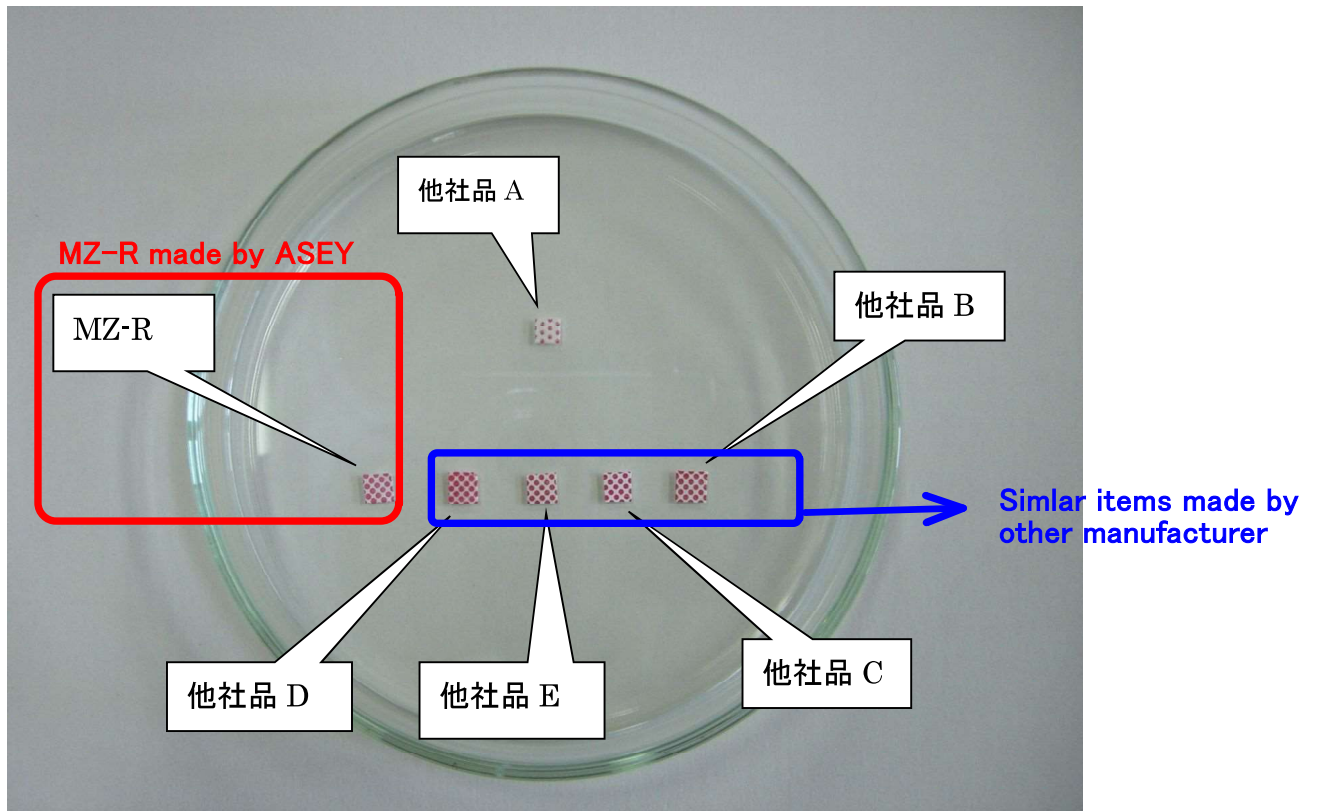
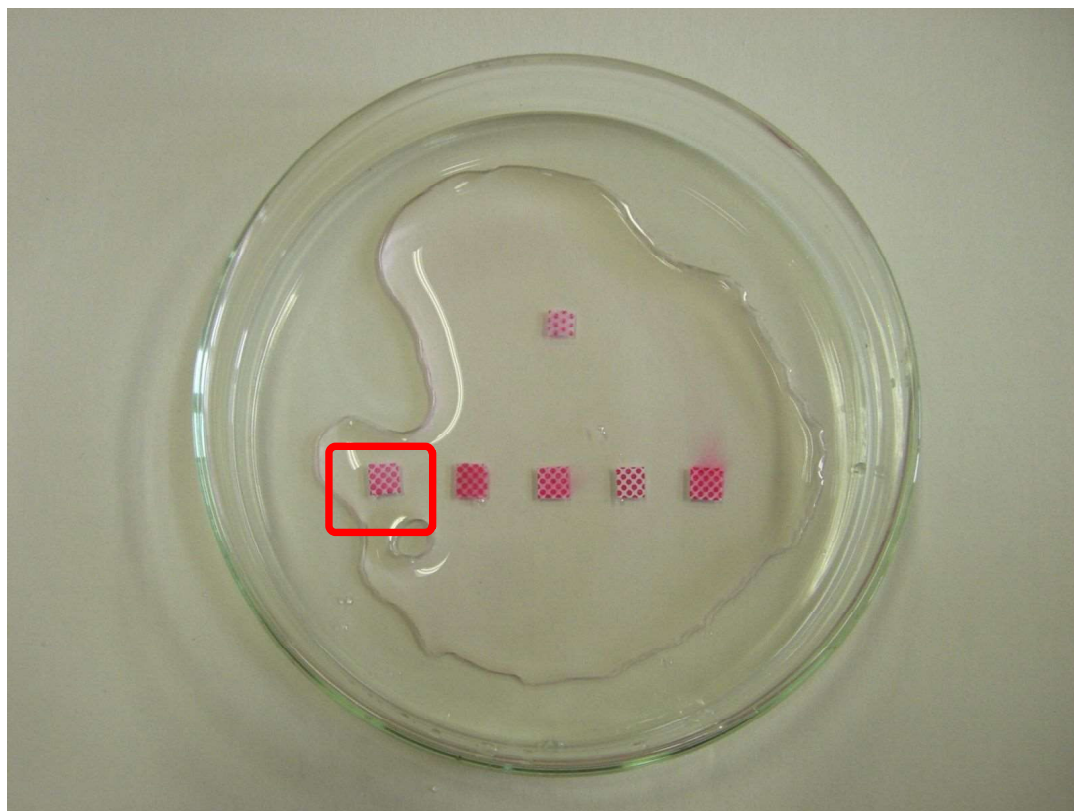


Comparison Test of Submerged Label MZ-R and other similar items (made by other company)

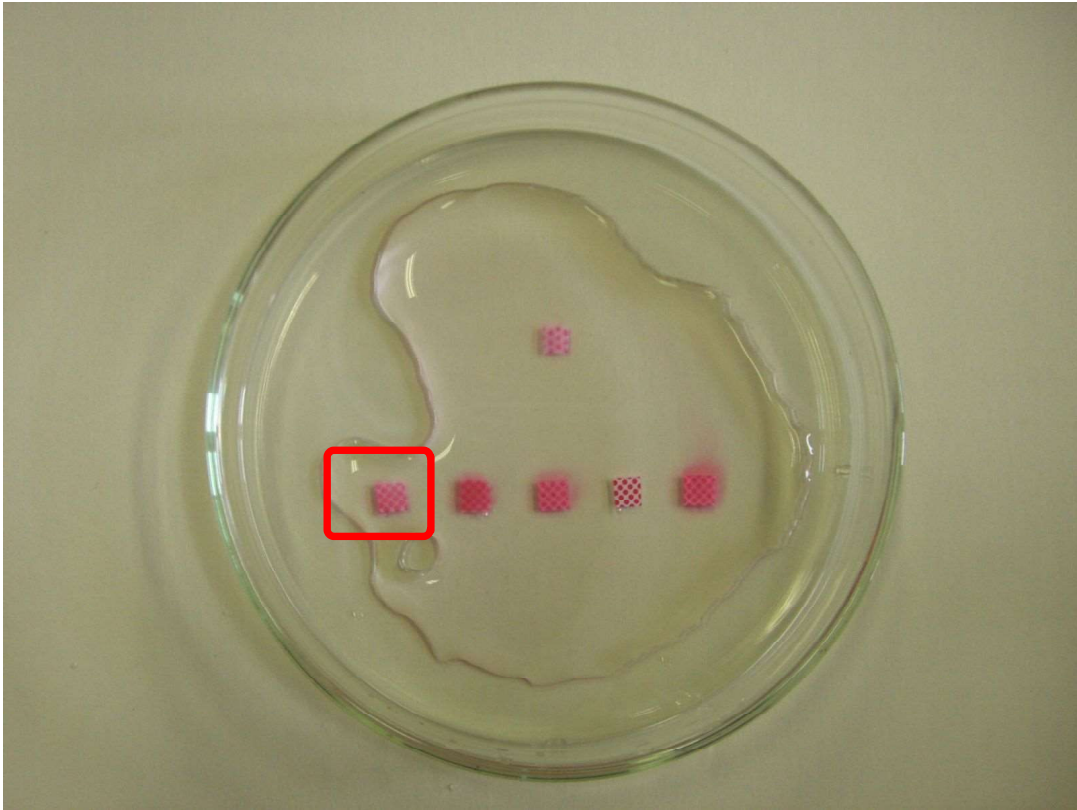
水没ラベル比較実験



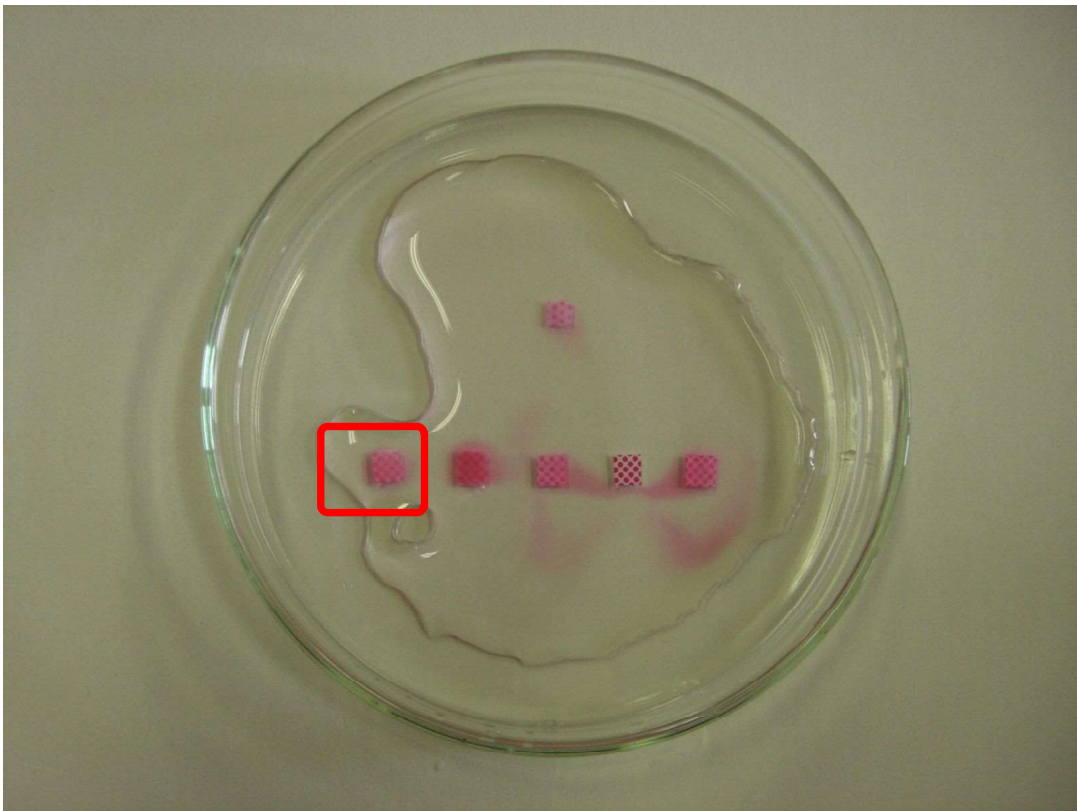
水没開始前 Feature of labels before putting into water



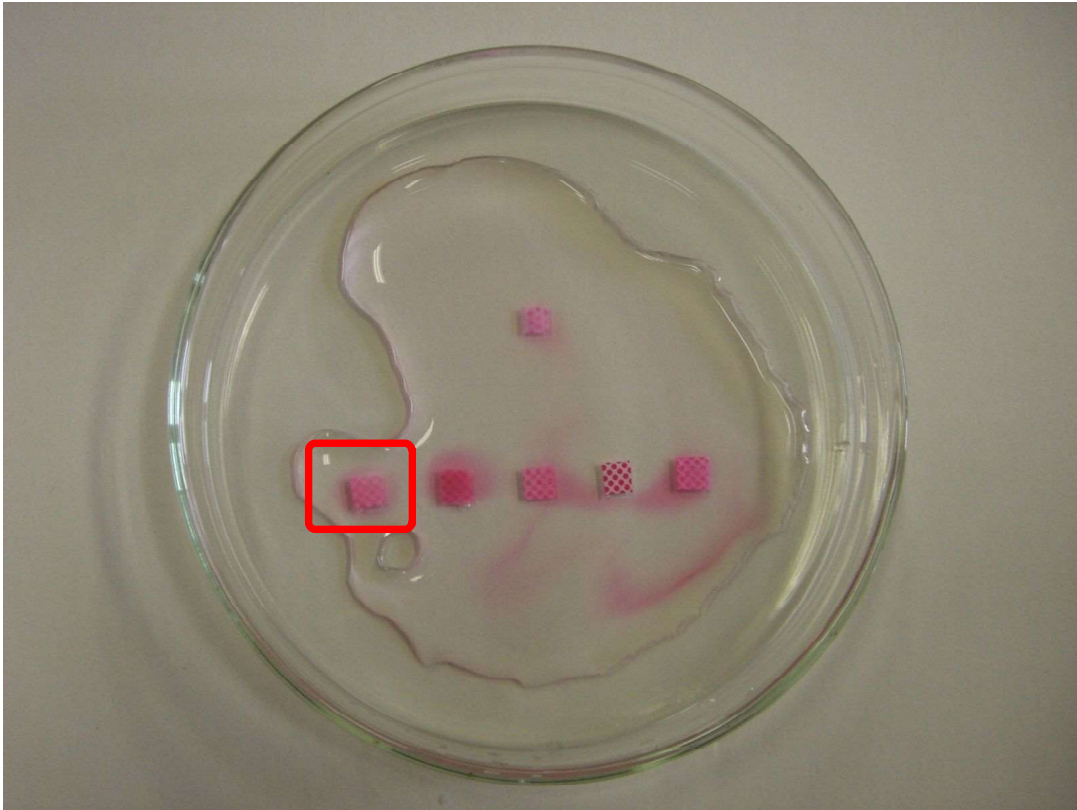
水没直後 Right after putting into water



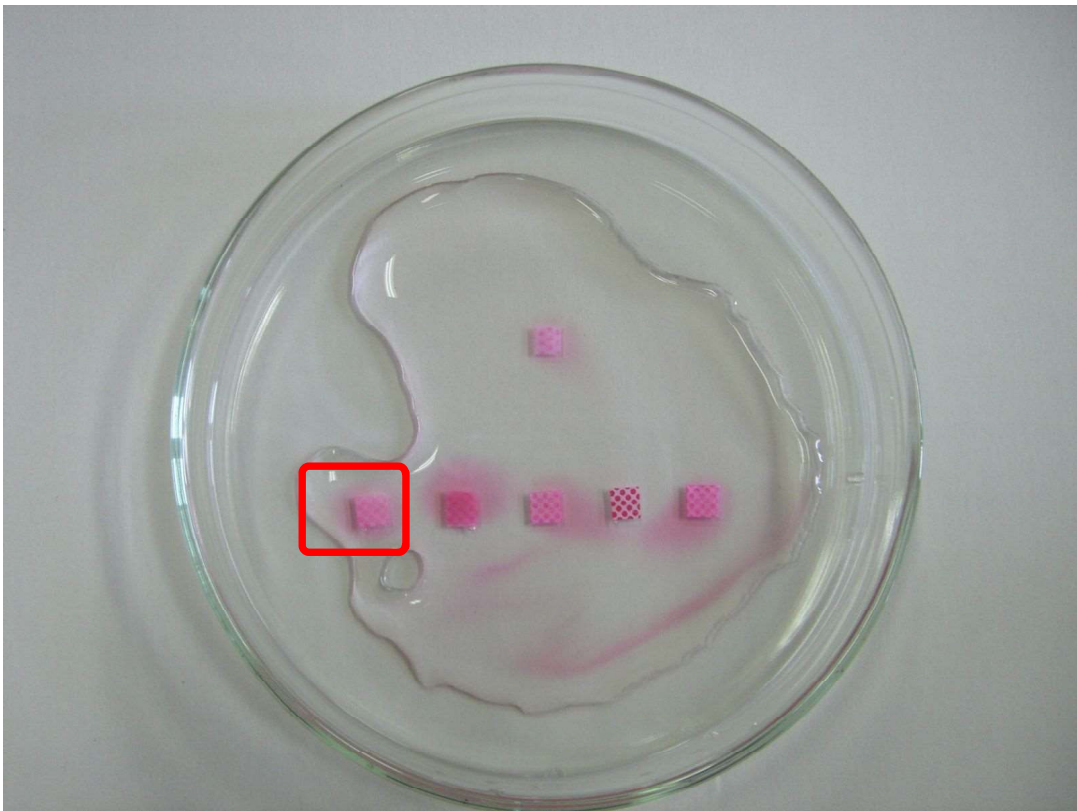
水没1分後 1 minute later



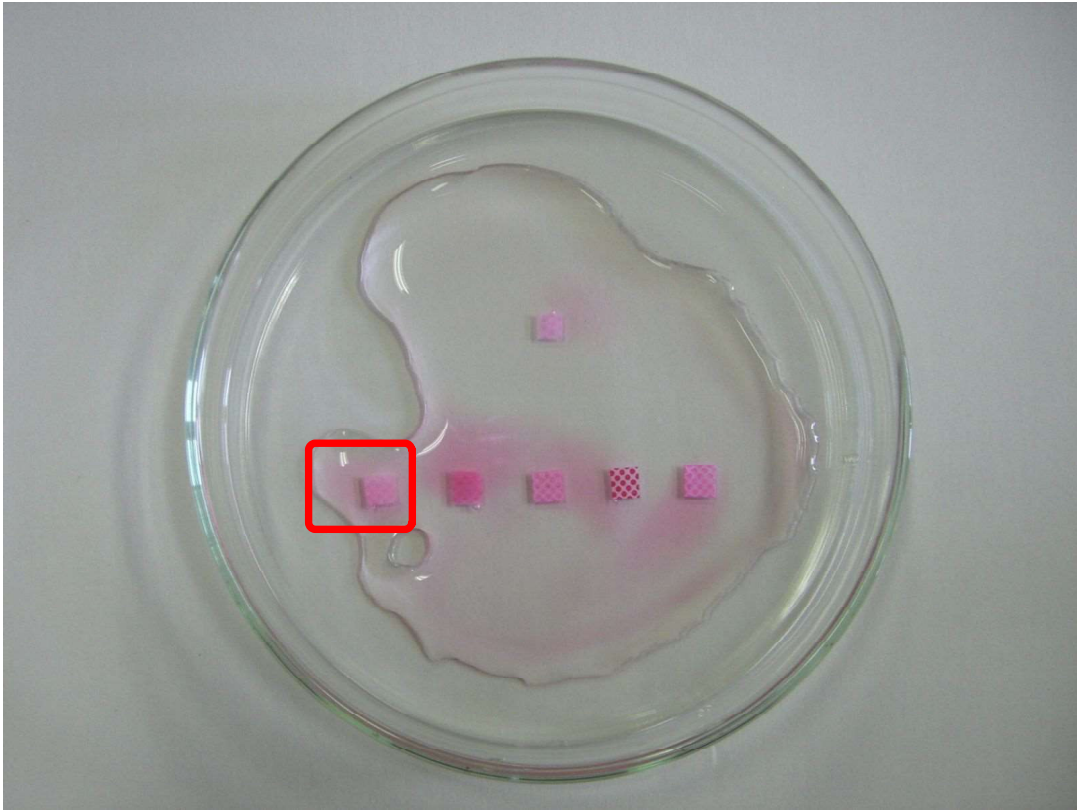
水没2分後 2 minutes later



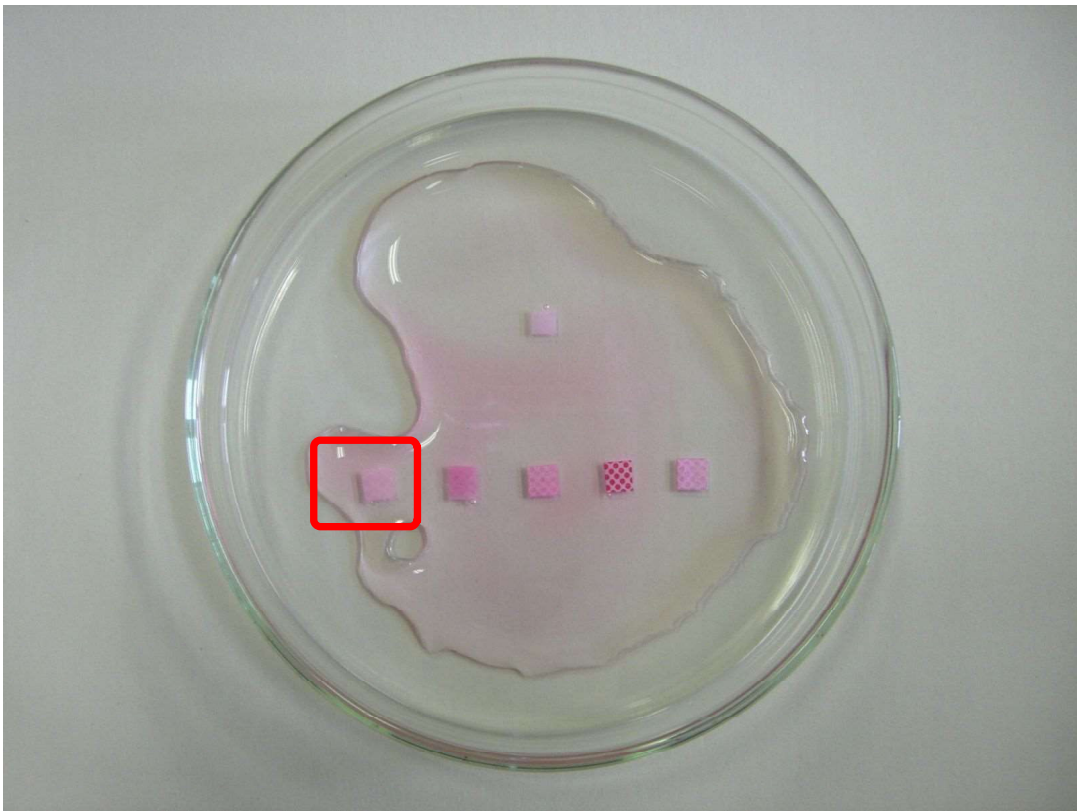
水没3分後 3 minutes later



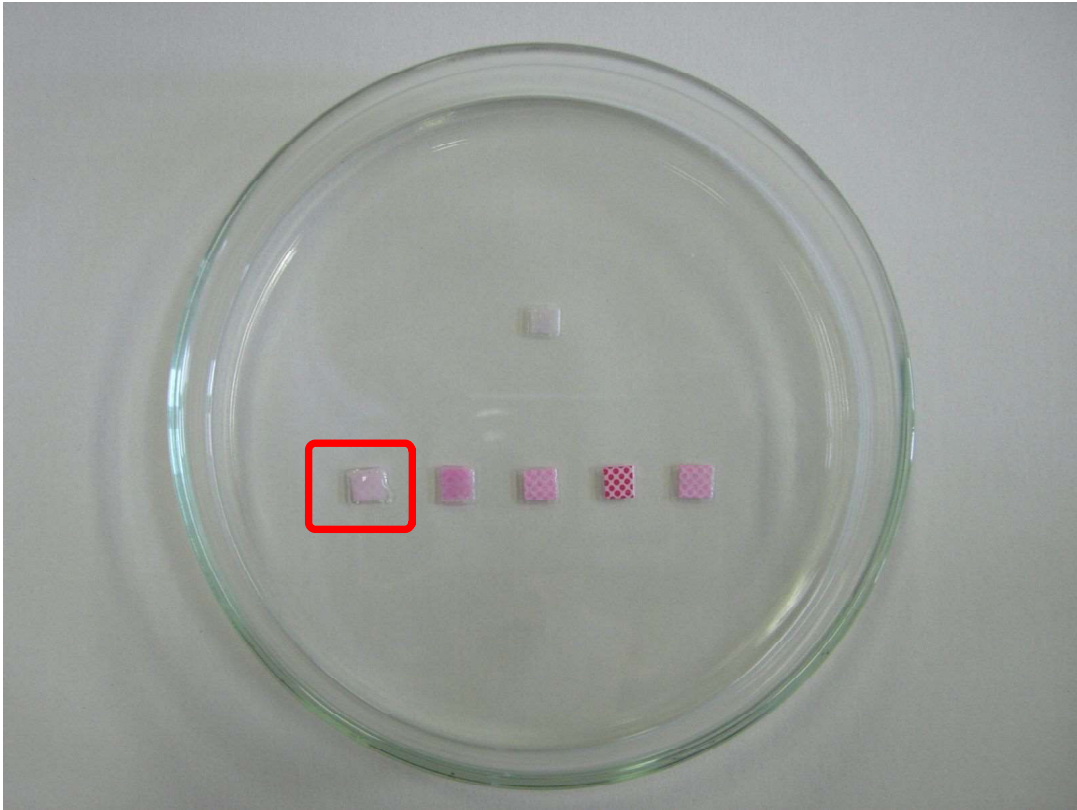
水没5分後 5 minutes later



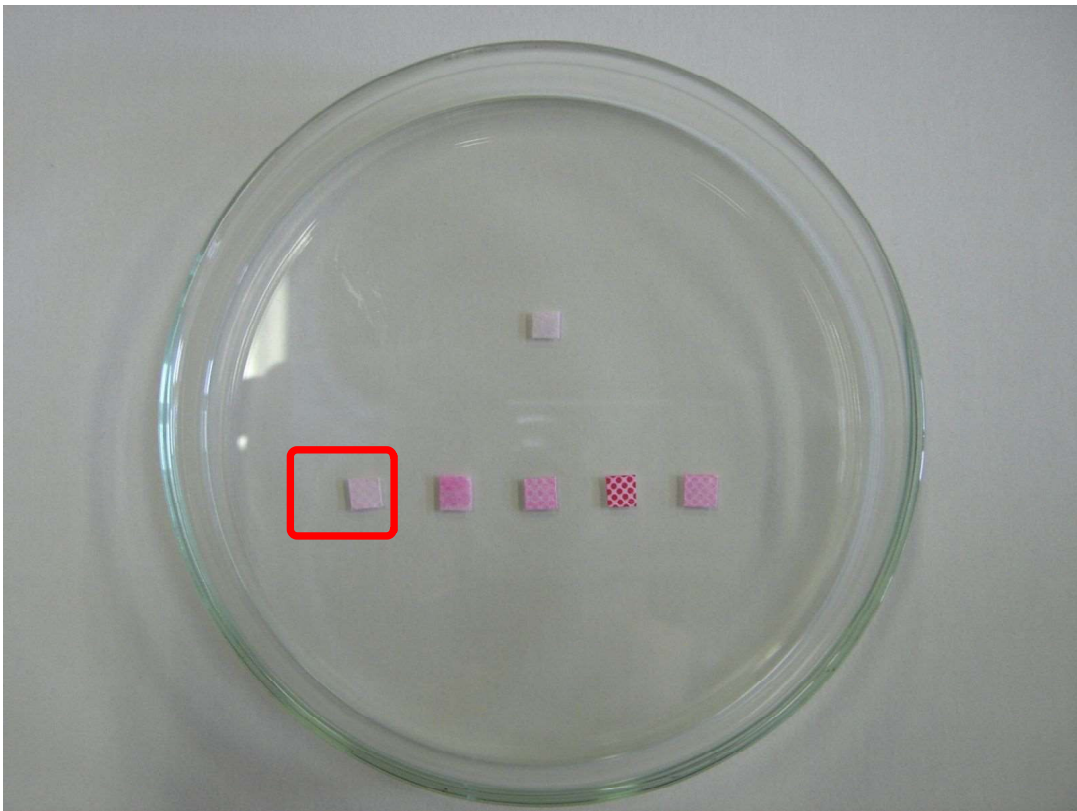
水没 10 分後 10 minutes later



水没 30 分後 30 minutes later



水除去 Feature of labels after removing water



乾燥 Feature of labels after drying