

Order Code	Description
<input checked="" type="checkbox"/> DPMD1	PosiTector Standard with DPM D Probe
<input type="checkbox"/> DPMD3	PosiTector Advanced with DPM D Probe

PosiTector® DPM Dew Point Meter		Compare PosiTector Gage Bodies	
Features	Standard	Advanced	
NEW Larger 2.8" impact resistant color touchscreen with redesigned keypad for quick menu navigation	●	●	
Auto Log mode runs unattended on batteries for up to 50 hours or continuously via USB	●		
Enhanced Auto Log mode turns the gage off between readings for up to 8 months of battery life. Each reading can be uploaded to PosiSoft.net or an FTP server using WiFi. Automatically group readings into batches at daily, weekly, or monthly intervals.		●	
Two year warranty on body AND probe	●	●	
User defined limits for all parameters—visible and audible warnings. Send email alerts when connected to WiFi.		●	
Reading Storage Capacity	2,500 datasets	250,000 datasets in up to 1,000 batches	
NEW Touchscreen keyboard for quickly renaming batches, adding notes, and more		●	
Store thickness, profile, environmental, salt contamination, hardness, and wall thickness measurements in individual batches		●	
Wet bulb temperature can be displayed and recorded		●	
Trend Charts graph readings in real-time		●	
Connection Options			
USB port for fast, simple connection to a PC and to supply continuous power. USB cable included.	●	●	
WiFi technology wirelessly synchronizes with PosiSoft.net and downloads software updates		●	
Bluetooth 4.0 Technology for data transfer to a mobile device running the PosiTector App or optional portable printer. BLE API available for integration into third-party software.		●	



Removeable Cabled Probe with 1/2" NPT Threads	Probe Model DPM D	
Surface Temperature		-
Air Temperature		✓
Wet Bult Temperature		-
Relative Temperature		✓
Dew Point Temperature		✓
Surface Temperature minus Dew Point Temperature		-
Wind Speed		-

DPM D Probe measures dew point, RH and air temperature.

- 1/2" NPT threads for insertion into tanks and pipes (max 1.3 MPa/200 psi)
- Sintered aluminum housing protects sensors

Order Code	Description
<input checked="" type="checkbox"/> DPMD1	PosiTector Standard with DPM D Probe
<input type="checkbox"/> DPMD3	PosiTector Advanced with DPM D Probe

All Gages Feature...

Simple

- All readings are constantly updated and displayed simultaneously
- No need to consult complex tables or use a slide rule calculator
- Alarms indicate when climate conditions are unsuitable for painting
- **NEW** Larger 2.8" impact resistant color touchscreen with redesigned keypad for quick menu navigation
- **NEW** On-gage help explains menu items at the touch of a button
- RESET feature instantly restores factory settings

Durable

- **NEW** Weatherproof, dustproof, and water-resistant—IP65-rated enclosure
- **NEW** Ergonomic design with durable rubberized grip
- Shock-absorbing protective rubber holster for added impact resistance
- Two year warranty on gage body AND probe

Accurate

- Fast response precision sensors provide accurate, repeatable readings
- SmartTrend™ Indicators identify rising, falling, or stable readings
- Certificate of Calibration showing traceability to NIST included (Long Form)
- Conforms to national and international standards including ISO and ASTM

Versatile

- Auto Log mode records environmental parameters at user selected time intervals
- Celsius/Fahrenheit switchable
- Selectable display languages
- **NEW** Auto rotating display with Flip Lock

Powerful

- Hold function freezes the display allowing measurements to be manually recorded
- Screen Capture—save 100 screen images for record keeping and review
- **NEW** Instant-on feature quickly powers up the gage if recently powered down
- **NEW** Up to 30% longer battery life
- USB port for fast, simple connection to a PC and to supply continuous power. USB cable included.
- Software updates via web keep your gage current
- Every stored measurement is date and time stamped
- Includes PosiSoft suite of software for viewing and reporting data (see page 3)

Specifications	Range	Accuracy	Resolution
Surface Temperature	-40° to 80° C	± 0.5° C	0.1° C
	80° to 190° C	± 1.5° C	
	-40° to 175° F	± 1° F	0.1° F
	175° to 375° F	± 3° F	
Air Temperature	-40° to 80° C	± 0.5° C	0.1° C
	-40° to 175° F	± 1° F	0.1° F
Humidity	0 to 100%	± 3%	0.1%
Dew Point	-60° to 80°C	± 3° C*	0.1° C
	-76° to 175° F	± 5.4° F*	0.1° F

*Dependent on RH. See www.defelsko.com/TdAccuracy for more information.



Comes complete with PosiTector gage body, DPM probe, environmental sensors, protective rubber holster, wrist strap, 3 AAA batteries, instructions, nylon carrying case with shoulder strap (DPM/DPMA/DPMD), hard shell carrying case (DPMS), protective lens shield, Long Form Certificate of Calibration traceable to NIST, USB cable, two (2) year warranty.

***SIZE:** 127 x 66 x 25.4 mm (5" x 2.6" x 1")

***WEIGHT:** 137 g (4.9 oz.) without batteries

CONFORMS TO: ISO 8502-4, BS 7079-B4, ASTM D3276, IMO PSPC, SSPC-PA7, and US Navy NSI 009-32

*Size and weight are for the PosiTector gage body only and do not include the probe.

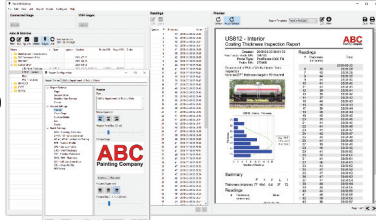
PosiSoft® Suite of Software

Powerful ways to view and report your PosiTector and PosiTest data

PosiSoft Desktop — PC/Mac

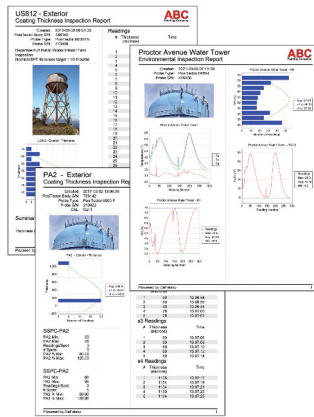
Powerful desktop software for downloading, archiving, and reporting measurement data.

- Import readings directly from the gage via USB, WiFi, or legacy PosiSoft Desktop versions
- **Jobs feature** consolidates batches into groups to keep measurement data organized and to quickly create multi-batch reports
- Fully integrates with PosiSoft.net—backup and synchronize jobs, batches, readings, and report templates to the cloud (see inset at right)
- Export readings as .csv (comma separated value) files for easy import into Excel and other spreadsheets



Professional, Custom Reports

- Compile single or multi-batch reports from multiple probes and instrument types
- Add pictures, screen captures, notes, and more with an onscreen live preview
- Instantly create professional reports from pre-formatted report templates
- Design custom layouts and templates—add custom cover pages and logos, and choose to display charts, histograms, and/or individual readings
- Drag-and-drop Custom Fields mode—import PDF forms and overlay fields to automatically populate inspection data

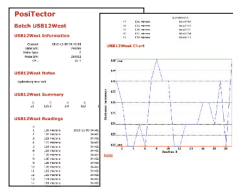


Prompted Batch Mode

Create pre-defined batches with onscreen text and image prompts for each reading and upload to PosiTector 6000, 200, and UTG gages (*Advanced models only*).

- Ideal for ensuring a consistent measurement pattern for repetitive jobs or when specific measurement locations are required

PosiSoft USB Drive — Gage based



A simple gage interface to retrieve data in a manner similar to USB flash drives or cameras. No software to install or internet connection required. Measurement data can be printed quickly from a formatted HTML report or exported in .csv format for further analysis in spreadsheets.

PosiTector App — iOS/Android

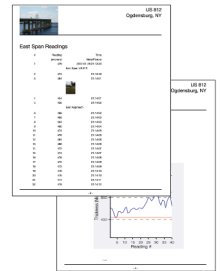
Fully-featured mobile app that connects to the PosiTector SmartLink, PosiTector Advanced gages, and the PosiTest AT-A.

- Auto pairing Bluetooth BLE connection
- Add images and notes to individual readings or batches directly from your device
- Email readings as .csv (comma separated value) files for easy import to Excel and other spreadsheets.
- Synchronize readings with PosiSoft.net—backup and synchronize jobs, batches, and readings to the cloud (see inset below)



Mobile Reporting Solution

- Compile single or multi-batch reports from multiple probes and instrument types
- Add pictures, screen captures, notes, and more
- Email pre-formatted or custom reports from your device instantly



PosiSoft.net

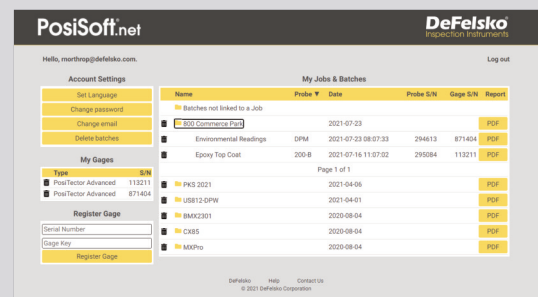
Secure storage of measurement data in the cloud.

compatible with PosiSoft Desktop and PosiTector App

- Upload measurement data directly from WiFi-connected PosiTector Advanced gages from anywhere in the world—no software required
- Synchronize and share measurement data across multiple computers

Ideal for...

- Users with multiple computers, instruments, and office locations
- Inspection companies managing data from multiple inspectors
- Login from PosiSoft Desktop to synchronize all measurement data and stored report templates from your account



PosiSoft.net Web Viewer Review measurement data and print simple, pre-formatted PDF reports from any web browser—no software installation required.

PosiTector Developer Resources

- Bluetooth 4.0
- WiFi
- Keyboard Mode
- USB Serial

PosiTector and PosiTest AT-A instruments can integrate with third-party software, drones, ROVs, PLCs, and robotic devices using several industry-standard communication protocols including: Bluetooth 4.0, WiFi, Keyboard mode, and USB serial.

