



3.9mm Dual View



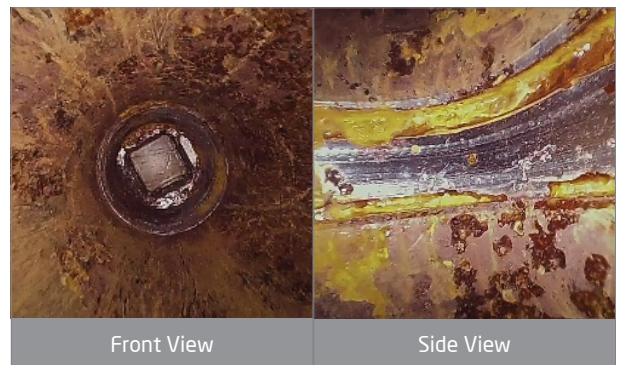
Convenient & Efficient

The 3.9mm dual view is available for the Mitcorp X2000 & X750. The dual-camera setup removes the need to switch probes mid inspection or to use mirror adaptors. Instead, it allows users to switch between front- and side-view with a single tap. Simple and convenient.

Clear Vision & Sharp Photos

Nothing is more important than to have a clear view and sharp images during an inspection. That is why the 3.9mm dual view boasts two powerful cameras that will give you a perfect overview and leave no flaw undetected.

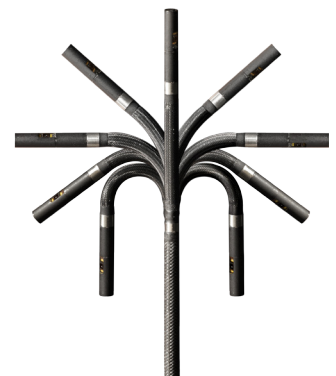
- HD resolution
- Wide FOV of 120°
- DOF of 5mm - 100mm



Maneuverability & Precision

Our insertion probes are made to get to even the hardest-to-reach places, and the 3.9mm dual view is no exception. It is highly flexible and small enough to reach your next inspection target with maximum efficiency and minimal effort.

- 3.9mm probe head diameter
- 4-Way Articulation
- Mechanical wiring (instant feedback & precise movements)
- Articulation up to 120°



Tungsten Reliability

The 3.9mm dual view probe has a protective tungsten braided outer layer. The strength and density of tungsten extend the probe lifespan significantly and make it waterproof as well as heat and scratch-resistant.

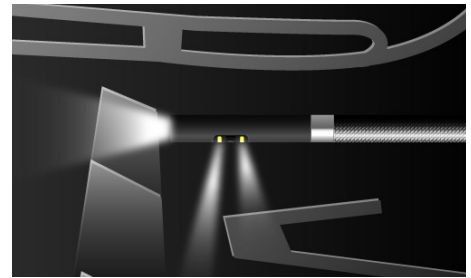
- Waterproof (1m depth ; 30min)
- 100°C heat resistance
- Unyielding to scratches and corrosion





Dual LED Setup

Light distribution is crucial to avoid glare spots and reflections. For that reason, the side view camera has two LED light sources, one below and one above the camera lens, allowing for evenly distributed light in any situation.



Specifications

| 394W-F_TU-M | |
|-------------------------------|---|
| Probe Head Diameter | 3.9mm |
| Probe Head Length | 21.6mm |
| Direction of View | Front + Side View |
| Illumination | Front + Side LEDs |
| Field of View (FOV) | 120° |
| Depth of Field (DOF) | 5mm ~ 100mm |
| Still Image Resolution (.jpg) | 1600x1600 (Dual) |
| Video Resolution (.mov) | 1600x1600 (Dual) |
| Articulation angle | Full ways≥120° |
| Probe length | 1.5m |
| Operating temperature | In air: -10~100°C, In water:10~30°C |
| Storage Temperature | Storage Temperature 10~70°C |
| Probe head material | Stainless Steel |
| Probe Material | Tungsten Braided |
| Joystick Buttons | Brightness+, Brightness-, snapshot / record |
| Lock and move | Joystick / Unlock switch on console |
| Dust and water proof | Joystick console: IP 54; Insert Tube: under water 1m for 30 minutes |
| Relative humidity | Max 95% non-condensing |
| Liquid resistance | Operable when exposed to machine oil, light oil or 5% saline solution |
| Rigid sleeve | OD: 6mm / ID: 5mm Protection: OD:8mm Extension joint ring: OD: 10mm |



www.mitcorp.com.tw
sal@mitcorp.com.tw

2F., No.75, Wenhua 1st Rd., Guishan., Taoyuan 333, Taiwan
T+886-3-328-7177 F+886-3-328-7176

