

Handheld Videoscopes

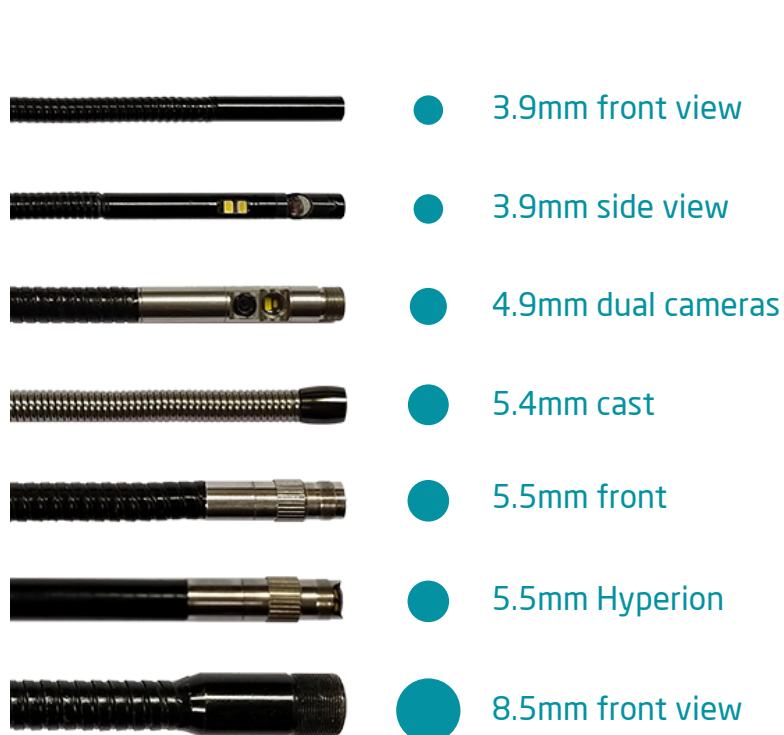
F series

- Available in 3.5" and 7" LCD
- Compact and lightweight, easy to use
- Multiple options of insert probes



Model	Outlook	Features	Insert probes options
F300		<ul style="list-style-type: none"> • 3.5" LCD • 4 x AA 1.5V batteries /USB DC-in power • Snapshot and video recording • AV out • LED brightness adjustment • Zoom in and Mirror view 	<ul style="list-style-type: none"> • Standard • Dual Cameras • Hyperion • Articulations • Pipe inspection
F500		<ul style="list-style-type: none"> • 3.5" LCD • Rechargeable Li battery • Snapshot and video recording • AV out • Auto power off function • Zoom in and mirror view • Long duty for approx. 4 hours 	<ul style="list-style-type: none"> • Standard • Dual Cameras • Hyperion • Articulations • Pipe inspection
F700		<ul style="list-style-type: none"> • 3.5" LCD • 4 x AA 1.5V batteries / USB DC-in power • Snapshot and video recording • AV out • LED brightness adjustment • Zoom in and Mirror view • B/W and color modes 	<ul style="list-style-type: none"> • Standard • Dual Cameras • Hyperion • Articulations • Pipe inspection
F1000		<ul style="list-style-type: none"> • 7" LCD • Rechargeable Li battery • Snapshot and video recording • AV out • LED brightness adjustment • Zoom in and Mirror view • Drop resistance : 1m • IP 57 • Long duty for approx. 4 hours 	<ul style="list-style-type: none"> • Hyperion • Articulations • Pipe inspection
<ul style="list-style-type: none"> • Working Temperature: 0°C~45°C (with battery) ; 0°C~40°C (with AC power adaptor) • Storage Temperature: 0°C~60°C • Relative humidity : 95%, non-condensing • Storage : SD card 			

Insert Probes - Standard



Dual cameras control box

- Front / Side camera switch button
- Green light - front view (0°)
- Red light - side view (90°)



Hyperion control box

- Boost
- Image rotation
- Anti-reflection / particle free

hyperion®



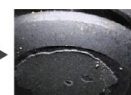
Boost



Anti-reflection




Particle free



Probe	Material	Length	LED	Mirror adaptor	DOF (Depth of Field)	FOV (Field of View)	Button	Resolution
3.9mm	Semi Rigid	1m,3m	Front/Side	N/A	10mm~60mm	56°	N/A	320x240
4.9mm Dual Cameras	Semi Rigid	1m,3m	Front+Side	N/A	10mm~60mm	56°	Front/Side view Switch	320x240
5.4mm Cast	Spring/ Stainless Steel	1m	Front	N/A	10mm~100mm	90°	Boost/Rotate	640x480
5.5mm	Semi Rigid / Soft Metal	1m,2m,3m/ 1m,2m,3m,5m,10m,30m	Front	Yes	10mm~60mm	56°	N/A	320x240
5.5mm Hyperion	Semi Rigid/ Soft Metal	1,3m / 1,2,3,5m	Front/Side	Yes	10mm~60mm	60.7°	Boost Image rotation Anti-reflection/ particle free	640x480
8.5mm	Semi Rigid	1,3m	Front	Yes	10mm~60mm	56°	N/A	320x240


Insert Probes - Articulation



Probes	Diameter	Articulations	Probe Material	Length	LED	DOF (Depth of Field)	FOV (Field of View)	Button	Resolution
One Way Articulation	4.5mm	One way 180°	Outer Braided Stainless Steel	1m	Front	10mm~100mm	90°	Boost, Rotate	640x480
	6.0mm				Front	10mm~60mm	87°	Boost, Rotate	
Two Ways Articulation	4.5mm	Two ways 180°	Outer Braided Stainless Steel	1.5m, 3m	Front	10mm~100mm	90°	Boost, Rotate	640x480
	 6.0mm	Two ways 155° (1m) Two ways 135° (3m)	PVC Coating	1m, 3m	Front / Side	10mm~60mm	90°	Boost, Rotate, Particle free	

*The maximum articulation may degrade over time.

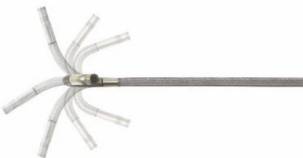
360 Articulation



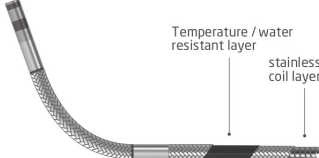
Intuitive mechanical articulation design

- Lightweight
- Reliable and durable
- Energy saving

shaft lock



- 360° articulation
- Provide flexibilities in narrow space inspection



- High density stainless steel braided tube provide durability, flexibility and also rusty, water and temperature resistant

Diameter	Articulations	Probe Material	Length	LED	DOF (Depth of Field)	FOV (Field of View)	Button	Articulation Shaft	Resolution
6.0mm	1m, 3m full ways ≥110° 5m, 7m full ways ≥80°	Outer Braided Stainless Steel	1m, 3m 5m, 7m	Front / Side	10mm~60mm	87°	Boost, Anti-reflection, Particle free, Rotate	Left-open / right-lock	640x480

*The maximum articulation may degrade over time.

Rigid sleeve



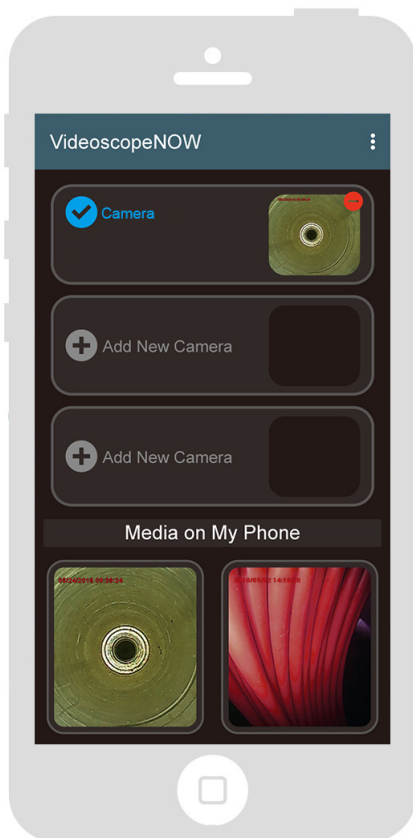
Rigid sleeve

Rigid sleeve

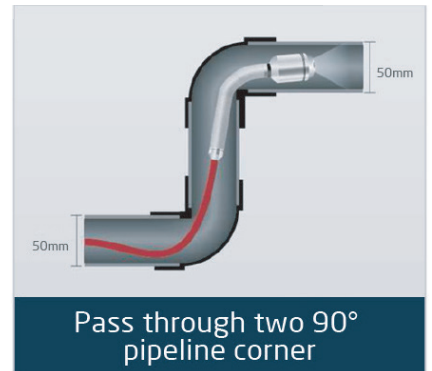
Pipe Inspection Videoscopes

F1700 / PRSL 300

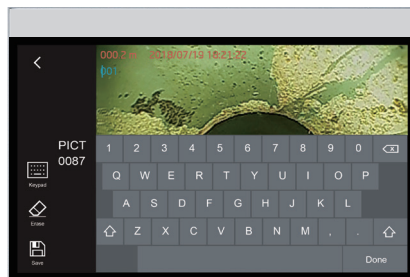
- 7" Touchscreen
- Meter on screen
- Wi-Fi live image share
- 30mm self-leveling camera head
- Available in 30m, 50m



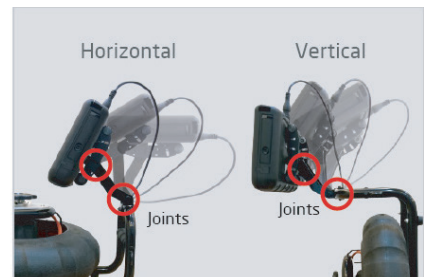
Self-leveling / 10 LED light



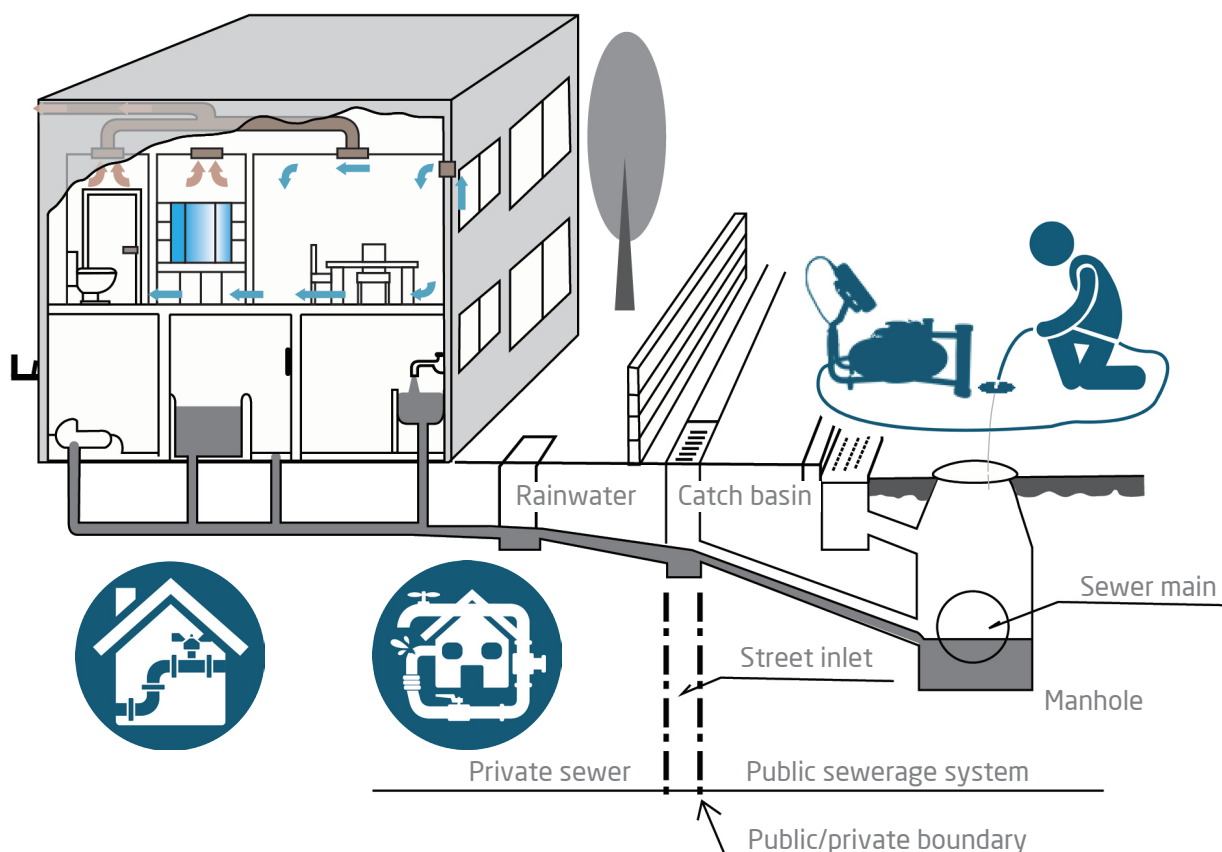
Pass through two 90° pipeline corner



Annotation



Console joint elbow



Specifications

F1700

Features	Description
Dimension	240mm x 154mm x 47mm
Weight	1.3kg (2.86lb)
Power source	Rechargeable Li battery. Up to 3.5hrs typical operation/3.5hrs charging
WLAN	802.11 b/g/n
Audio input	Built in microphone
Storage	SD card, up to 32G
USB	Mass storage mode/Webcam mode
Image format	640x480 .jpg
Video format	640x480 .jpg
Working temperature	0°C~45°C
Storage temperature	0°C~60°C
Charging temperature	10°C~40°C
Drop resistance	1m
Certification	CE/FCC/TELEC/NCC

PRSL 300

Camera head	
Resolution	640 x 480
FOV	150°
DOF	3cm~ ∞
Probe head diameter	30mm
Probe head material	Stainless steel
Water proof	Under water 10m for 30 minutes
LED	Front
Working temperature	-10°C~60°C
Storage temperature	0°C~60°C
Reel	
Diameter	340mm x 220mm x 420mm
Material	Steel frame HDPE cable reel
Probe	
Diameter	Φ6.6mm
Length	30m/50m
Weight	30m 6.9kg (w/F1700) 50m 8.2kg (w/F1700)

Pipe Inspection Videoscopes

PRM280

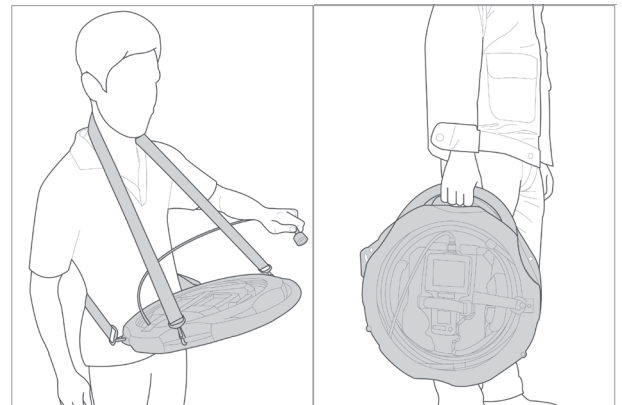
- Superior patented design
- Great for rugged and curved inspection
- Stainless steel camera head
- Water and dust proof
- Work for systems: F300, F500, F700, F1000



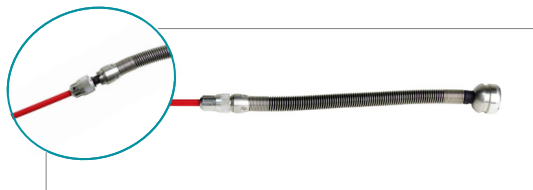
F1000

PS

- Light weight, easy to carry on and move
- Highly convenient for heavy duty operation
- Works for 3.5" systems: F300, F500, F700



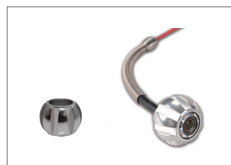
● Accessories for PRM280



Interchangeable Probe



Meter



Metal Ring Φ50mm



Wagon Φ150mm-300mm



Large Brush
Φ150mm or Φ100mm

PRM280

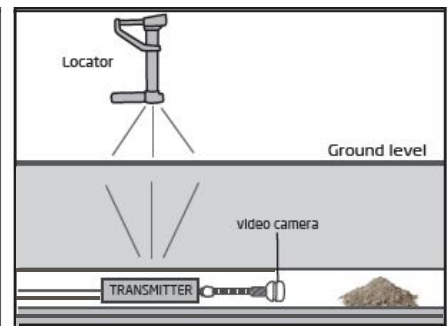
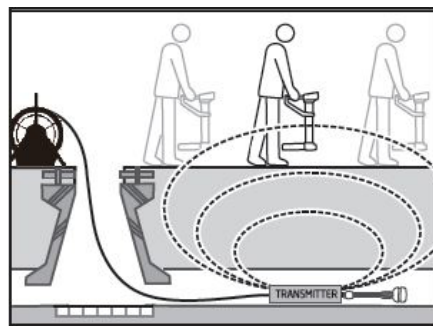
Camera head	
Resolution	640 x 480
FOV	150°
DOF	10mm~∞
Probe head diameter	28mm
Probe head material	Stainless steel
Water proof	Under water 10m for 30 minutes
LED	Front / white
Working temperature	-10°C~60°C
Storage temperature	0°C~60°C
Reel	
Reel Frame Diameter	300mm
Material	Steel frame HDPE cable reel
Probe	
Cable diameter	6mm
Length	30m
Weight	3.5kg (whole set)
Meter	
Buttons	Power/Reset, m/ft counter, Backlight
Deviation	±0.4m (±0.4ft)
Water proof	IP55
Power capacity	≥90hrs



- Easy to use
- Up to 1.8m measurement depth
- IP55
- LED backlight function keys

Features	Description
Dimensions	293.5mm / 144mm / 486.5mm
Weight	2kg
Power source	Rechargeable Li-ion battery. Up to 6hrs typical operation/ 3hrs charging
Power consumption	282 ma
Battery charge	3 hours
Power cycle	6 hours
Power adaptor	5.5V, 1.8A
Humidity	95%, non condensing
Working temperature	0°C~45°C (with battery) ; 0°C~40°C (with AC power adaptor)
Storage temperature	10°C~60°C
Drop resistance	600mm
IP protection	IP55

Signal strength cover searching area approximately: Horizontal 4.5m (15 feet); Vertical 1.8m (5.9 feet).



• Pipe inspection videoscope models

Model	PRSL 300 (F1700)	PRM 280 (F1000)
Camera head	<ul style="list-style-type: none"> • $\Phi 30\text{mm}$ • Self leveling camera • 10 LED 	<ul style="list-style-type: none"> • $\Phi 28\text{mm}$ • Steady camera • 8 LED
Main system	<ul style="list-style-type: none"> • 7" LCD touch screen • IP57 • Meter on screen • Wi-Fi image share 	<ul style="list-style-type: none"> • 7" LCD • IP57
Reel	<ul style="list-style-type: none"> • Camera head holder • Rotating shaft Lock • Solid console joint elbow • HDPE tube reel 	<ul style="list-style-type: none"> • Meter on reel • Detachable console joint • Available transmitter camera head for locator
Probe length	30m/50m	30m
Wireless	Yes	No
Accessory	Metal ring, Brush	Metal ring, Brush, Wagon, Locator