

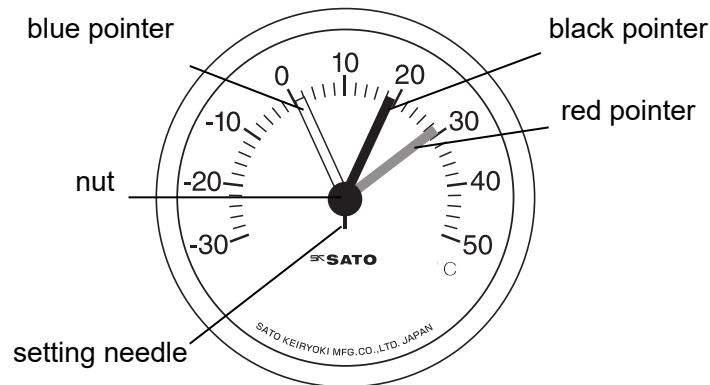
# INSTRUCTION MANUAL

## Min-Max Thermometer Model MIN-MAX II

Thank you for purchasing the Min-Max thermometer Model MIN-MAX II.

- This instrument is designed to measure indoor temperature. Do not use it for other purposes.
- Be sure to read this manual thoroughly before using the min-max thermometer. Keep this manual in a safety place for future references.

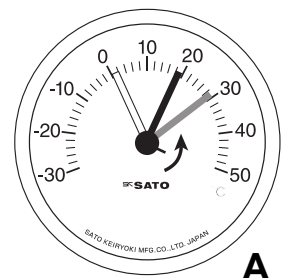
### Name of section



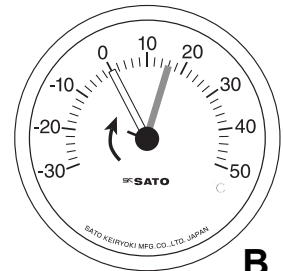
### How to use

#### 1. Settings (before use)

- Overlap the red pointer (max. temperature) on the black pointer (current temperature) by turning the nut counterclockwise. (refer to A)
- Turn the nut clockwise to overlap the blue pointer (min. temperature) on the black pointer (current temperature). (refer to B)



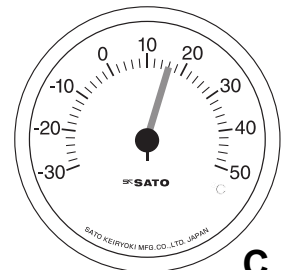
**A**



**B**

When three pointers are overlapped, settings will be completed. (refer to C)

After completed, be sure to set back the setting needle just under by turning the nut.

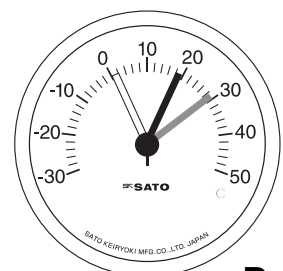


**C**

#### 2. How to read min. and max. temperatures (refer to D)

Red pointer: indicates the maximum temperature during the measurement from just after the settings are completed.

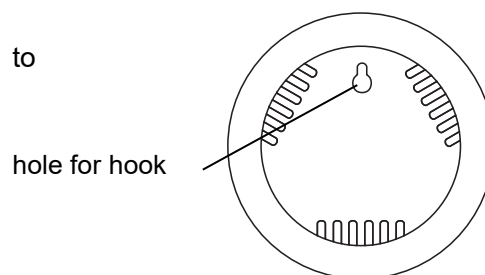
Blue pointer: indicates the minimum temperature during the measurement from just after the settings are completed.



**D**

### 3. Installation

Use the hooking hole shown on the rear of the case to mount the unit perpendicularly on a wall.



### Cautions in Installation

- Mount the unit at your eye height on a perpendicular wall that is free from vibrations.
- Do not mount the unit subject to direct air flow from an air conditioner or a heater.
- Do not expose to direct sunlight or splashing water.

### Cautions in Use

- Do not move the black pointer by turning the setting nut.
- After completed, be sure to set back the setting needle just under by turning the nut.
- It takes about 30 min. to indicate accurate temperature after unpacked.
- This is a precision instrument. Do not drop or apply impact to it. Doing so may result in malfunction.
- Do not use this instrument in an atmosphere out of measuring range (-30 to 50°C).
- Do not use the instrument at a place subject to water splash.
- If the unit becomes dirty, wipe it with a dry soft cloth.
- This instrument is not suitable to use for certification purpose.
- It is desirable to check the readings with the reliable thermometer once a year.
- Warranty period: On year from the date of purchasing

### Specifications

Model	No. 7310-00 Mini-Max Thermometer Model MIN-MAX II	
Measuring range	-30 to 50°C	
Accuracy	±2°C	
Materials	Case and cover: ABS resin	Window: Acryl resin
Dimensions	130(W) mm x 35(D) mm	
Weight	approx. 125 g	

## **SATO KEIRYOKI MFG.CO.,LTD.**

3-4, Kanda-kajicho, Chiyoda-ku, Tokyo 101-0045 JAPAN

TEL: +81(0)3-3254-8117 : (0)3-3254-8123

URL: <http://www.sksato.co.jp/english/>

O.06